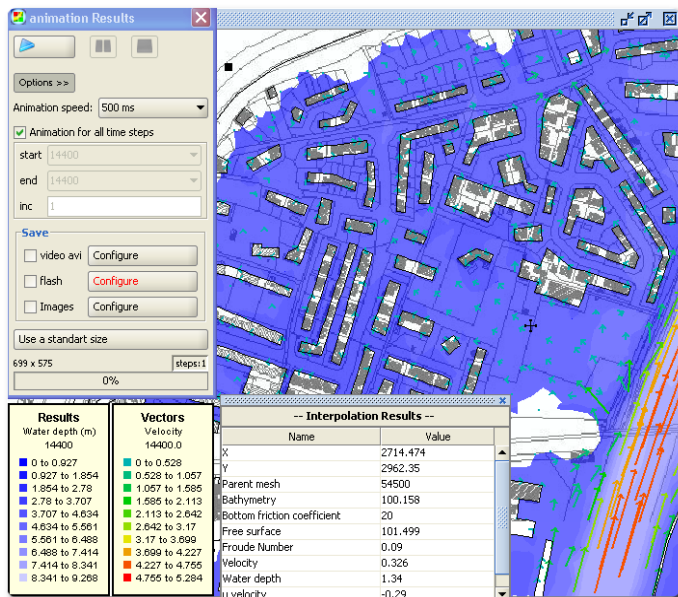


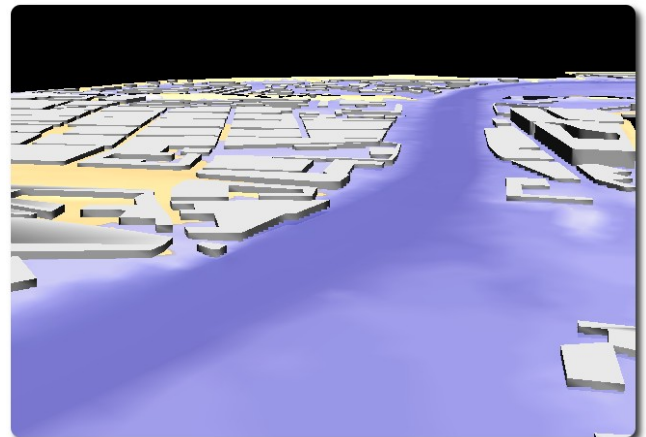
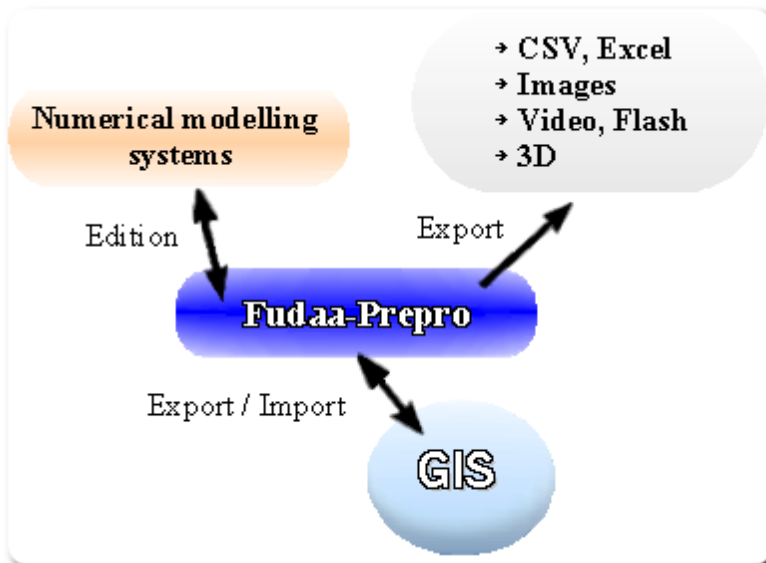
Fudaa-Prepro: Graphic User Interface for Reflex/ Rubar/ Telemac



Fudaa-Prepro provides tools to prepare and launch a flow study. All the parameters can be easily edited thanks to interactive editors:

- Keywords / numerical parameters
- Nodal/mesh properties: bottom friction, ...
- Boundary conditions
- Liquid boundary conditions
- Initial conditions
- Transient curves
- Sources / culverts / weirs
- Structures / storm water
- Georeferenced images

Fudaa-Prepro uses a light GIS module allowing the user to create, use and share geographic data.



Fudaa-Prepro can also be used to analyze the results:

- Produce graphs and animations in 1D, 2D and 3D
- Edit variables
- Compare with/import other results
- Perform advanced search
- Export to GIS format

